



PERIMETER PROTECTION SOLUTION DV-EYE

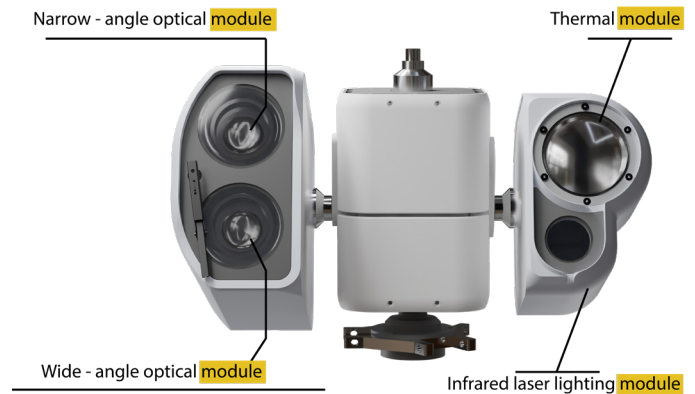
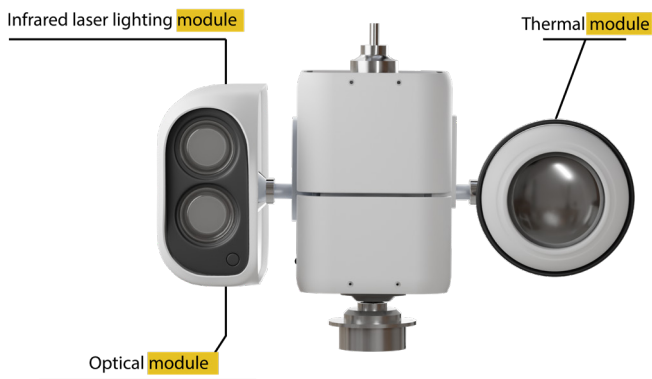


FIXED CENTRAL POLE TRACKER



The unique DV-EYE tracker design provides full upper hemisphere all around view both for radar and camera.

The DV-EYE tracker and the DR-500 / DR-1200 or GR-800/ GR-1200 radars are factory calibrated and complement each other in the Radar-IQ perimeter protection system.



The modular design allows additional equipment to be jointed with the camera. For example thermal imaging modules, IR and laser illumination.

Features:



Low power



Direct drive mechanism

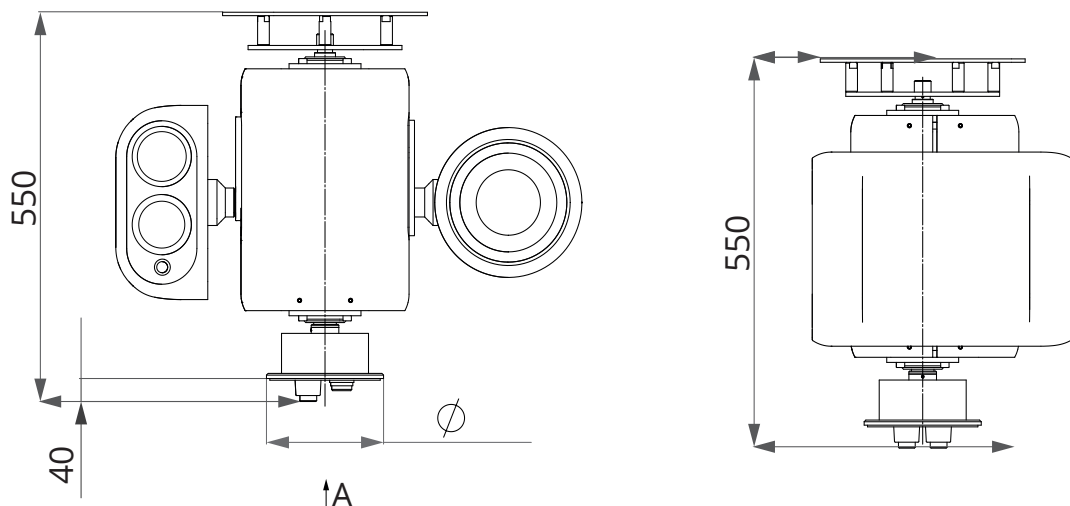


360° view



High Security and precision

SPECIFICATIONS



TRACKER SPECIFICATIONS	DV-EYE
General specifications	
Body type	Rotary, with a through axle
Power supply	48 VDC
Max. power	250 W
Operation temperature	-40°/+60°(-50°/+60° option)
Protection	IP 65
Housing material	Metal, plastic
Tilt	-90° ~ +90°
Pan	360°, unlimited
Weight (without side modules)	Up to 20 kg
Side modules load	Up to 20 kg total
Optical module (optional)	
Matrix	1/1,8»CMOS
Resolution	≤ 1920x1080
Lens	f=6.5-162 mm
Aperture	f/1.6-4.8
Laser lighting	
Power	4 Bt
Wavelength	850 nm
Angle	2° ~ 70°
Max. distance	800 m
Thermal vision	
Detector type	Uncooled infrared
Response band	8-14 μm
Frame rate	≤ 60 GHz
Pixel size	12 μm
NETD	≤ 40mK (@F/1.0, 50 Hz, 300 K)
Resolution	640x512; 1280x1024