

ASSET

PERIMETER PROTECTION SOLUTION

peripheriq

TRACKER V17 - FIXED CENTRAL POLE PTZ CAMERA



The unique V17 tracker design provides full upper hemisphere all around view both for detector and camera.

The V17 tracker and the A5/A12 or G8/G12 detectors are factory calibrated and complement each other in the Peripheriq perimeter protection system.

Integrated AI controller on board.



The modular design allows additional equipment to be jointed with the camera.
For example thermal imaging modules, IR and laser illumination.

Features:



Low power



Direct drive mechanism

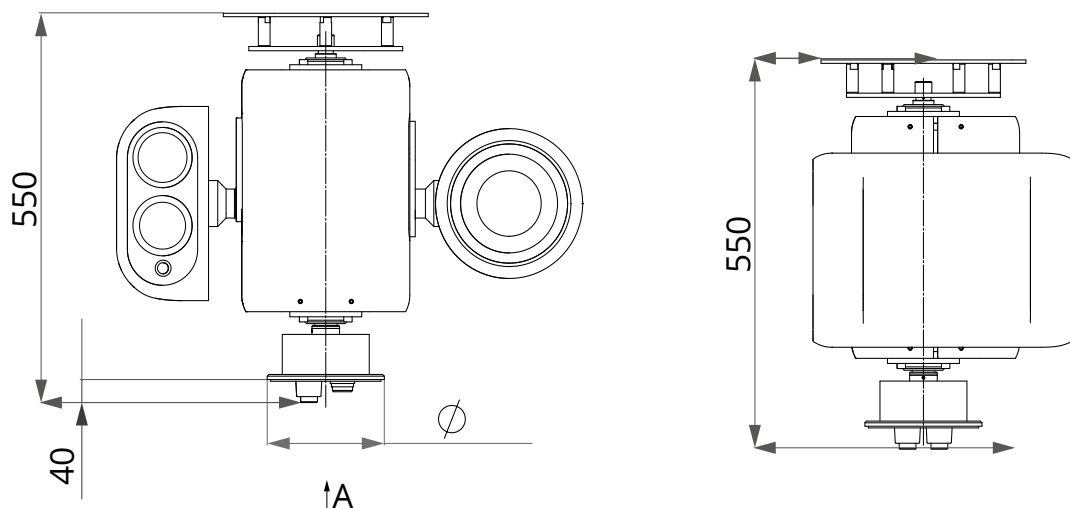


360° view



High Security and precision

SPECIFICATIONS



TRACKER SPECIFICATIONS	V17
General specifications	
Body type	Rotary, with a through axle
Power supply	48 VDC
Max. power	250 W
Operation temperature	-40°/+60°(-50°/+60° option)
Protection	IP 65
Housing material	Metal, plastic
Tilt	-90° ~ +90°
Pan	360°, unlimited
Weight (without side modules)	Up to 20 kg
Side modules load	Up to 20 kg total
Optical module (optional)	
Matrix	1/1,8" CMOS
Resolution	≤ 1920x1080
Lens	f=6.5-162mm
Aperture	F1.6-4.8
Laser lighting	
Power	4 W
Wavelength	850 nm
Angle	2° ~ 70°
Max. distance	800 m
Thermal vision	
Detector type	Uncooled infrared
Response band	8-14 μm
Frame rate	≤ 60 GHz
Pixel size	12 μm
NETD	≤ 40mK (@F/1.0, 50Hz, 300K)
Resolution	640x512; 1280x1024

